



### 'Edge' TV pilot wraps production in NM

By Adrian Gomez | Assistant Arts Editor

Monday 31 August 2015

*Max Martini wrapped up production on the pilot for "Edge," where he plays the title character.*

That's a wrap on another New Mexico TV production.

The pilot, "Edge" finished shooting in and around Santa Fe recently.

The show is produced by Amazon Studios LLC/Picrow Inc. Based on the George G. Gilman best-selling book series, "Edge" will showcase the sly, raw power of the spaghetti western.

Set in 1868, Max Martini stars as Josiah "Edge" Hedges – a cowboy who prowls the post-Civil War American West doling out his own peculiar, and savage, brand of justice.

Edge goes on a bloody mission of vengeance when his younger brother is killed by a group of his former Union army comrades, lead by his nemesis, Merritt Harknett, played by Ryan Kwanten. Edge is described as fearless, intimidating and "the meanest-looking man in any room he chooses to enter."



*Ryan Kwanten recently filmed the TV pilot, "Edge" in and around Santa Fe.*

Kwanten's character is the son of a prominent senator who can seem charming until he is revealed for who he actually is — a psychotic sadist who

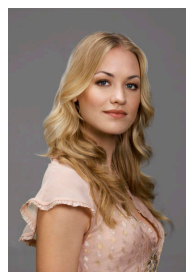
delights in inflicting pain on others. He is pursuing Edge for an undisclosed reason.

"Edge" also stars Yvonne Strahovski as Beth.

According to the New Mexico Film Office, the production employed about 150 New Mexico crewmembers and about 20 New Mexico background talent, and was based at the world-class **Santa Fe Studios**.

"When I first saw the film 'The Man From Laramie' as a little boy to me that's what the West should look like. Spectacular vistas, yellow turning to red sunsets, enchanted mountains surrounded by low hanging clouds, and perfect weather conditions for colorful photography," said Barry Josephson, executive producer, in a statement. "The fact that New Mexico has so many varied western locations make it impossible not to film a western here. While shooting the 'Edge' pilot, we were able to film western towns, homesteads, rivers, mountains, long winding trails, ranches, and beautiful valleys. We could not have possibly shot as many varied locations anyplace else on earth."

The pilot has a story by Shane Black and Fred Dekker, teleplay by Fred Dekker, is directed by Shane Black, and executive produced by Shane Black, Fred Dekker, Josephson and David Greenblatt.



*Yvonne Strahovski stars in the TV show, "Edge."*